

# **Disassembly Instructions**

[This page left intentionally blank]

Table of Contents

	Page No
Disassembly Instructions .....	5
Domesheet Exchange Instructions .....	8

[This page left intentionally blank]

## Disassembly Instructions

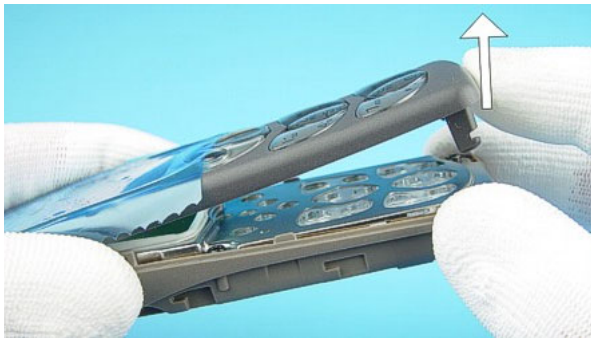
(also see the video clips on care point)



If not already done, protect the display window with a film to avoid dust and scratches.



Press the Release Button before removing the Battery Cover.



Open A-Cover from the bottom side on.



Now, the Keymat can be taken away easily.



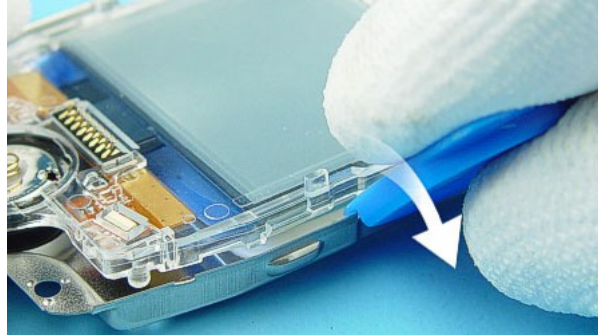
Unscrew the six Torx Plus® size 6 screws. **For assembly, the reverse order and a Torx Plus driver with a torque of 21Ncm have to be used.**



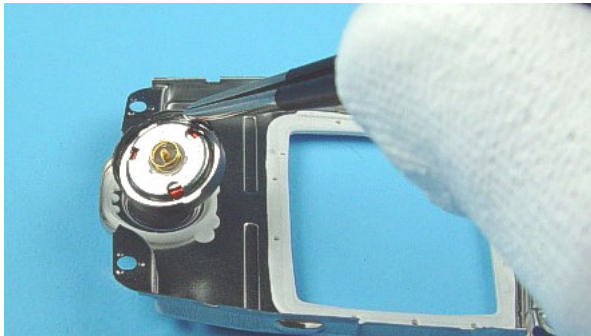
Take the LCD Assy from the Engine Module.



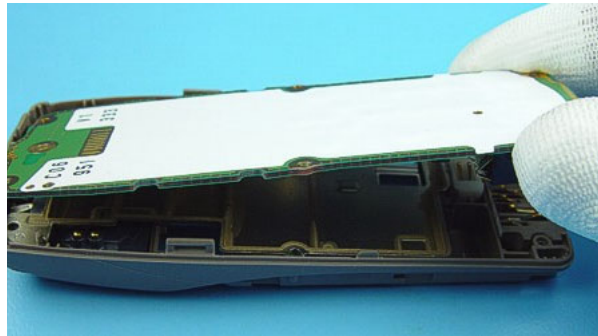
Unlock the LCD snaps of the LCD Light guide on the bottom side.



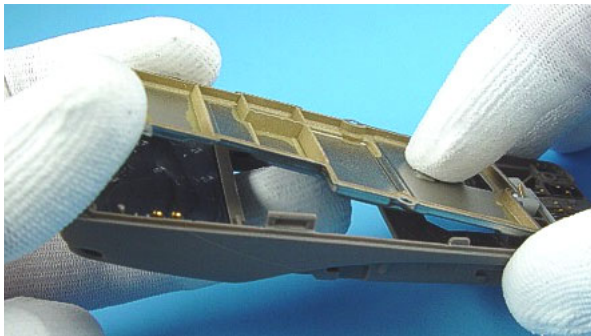
Unlock the LCD snaps of the LCD Light guide on the top side.



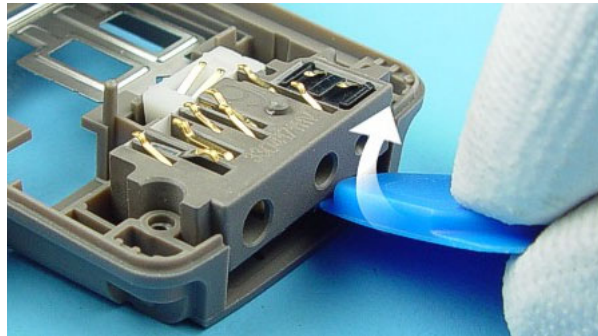
Use tweezers when removing the Speaker.



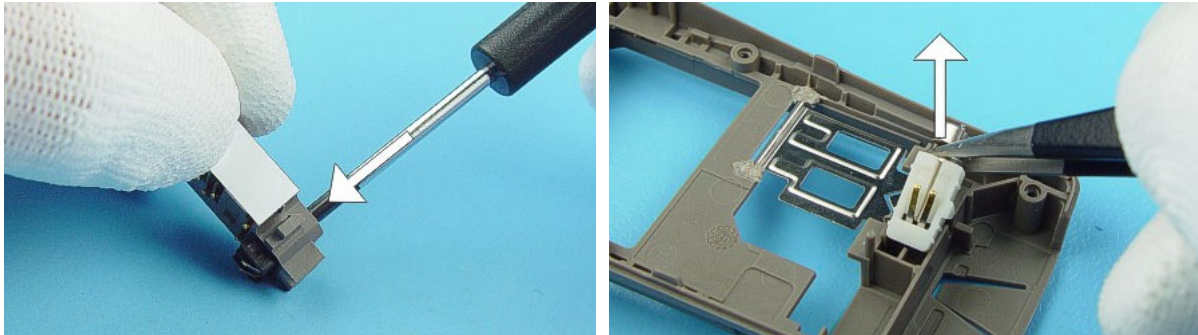
Take the Engine Module from the D-Cover.



Lever out the Shielding.



If the System Connector is tight in the D-Cover, SRT-6 should be used to loosen it.

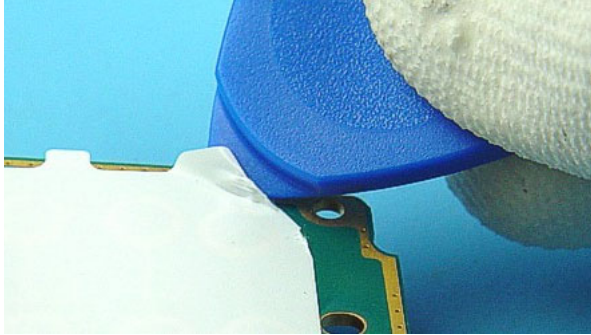


Note that the Microphone fits very tight in its guidance. Carefully push out the Microphone from the System Connector. Moderate force is required for this action.

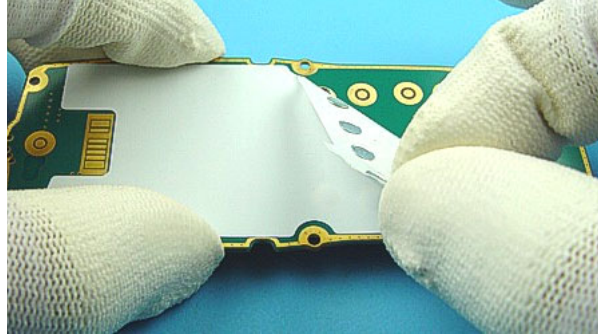
Lever out the Vibra Motor with tweezers.



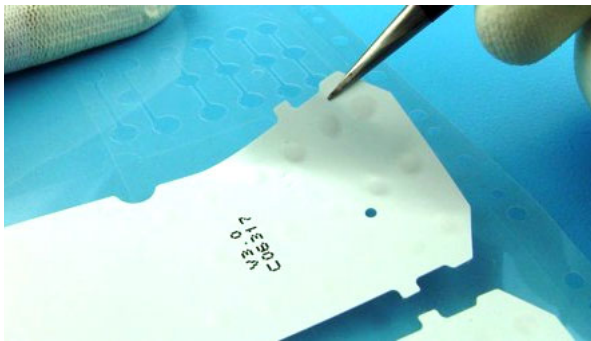
## Domesheet Exchange Instructions



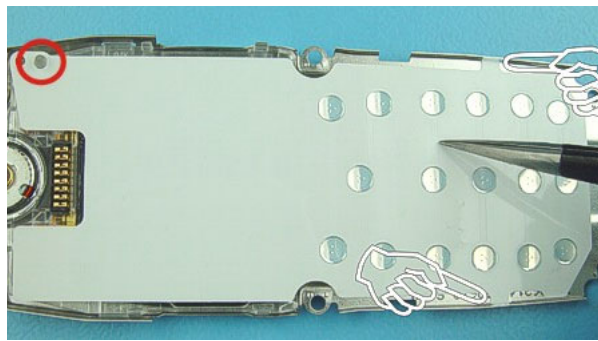
Use SRT-6 to loosen one corner of the Dome Sheet.



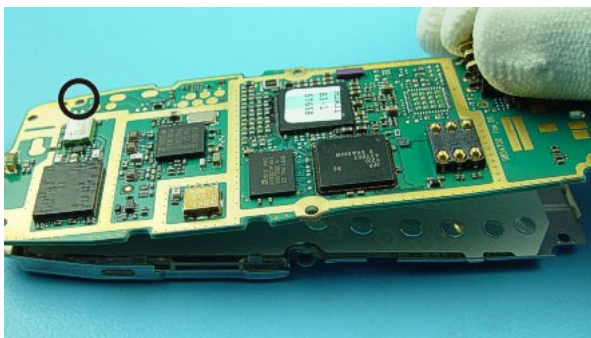
Tear off the Dome Sheet in diagonal direction to avoid remains of glue. Check pads for cleanliness.



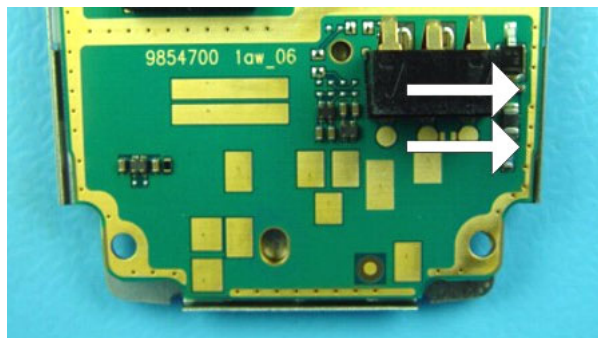
Take a new Dome Sheet from the carrier film. Do not touch the keydomes from the adhesive side.



Use the guiding pin (red circle) and the C-Cover's edges, as well as the two little assembly flags of the Dome Sheet as reference points.

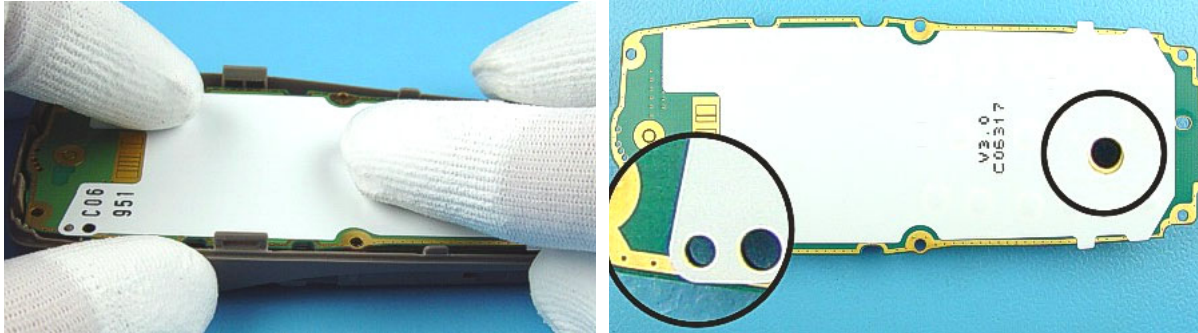


Carefully place the Engine Module from topside on. Note the guiding pin.



Before sinking the Engine Module, make sure that it is also close to the same side of the shielding.





Place the Engine Module into the D-Cover. Carefully press on the Dome sheet to the Engine Module to avoid bubbles.

Finally, check if the holes of the Dome Sheet match exactly the ones in the Engine Module. Otherwise, change the Dome Sheet again! Check the Keyboard functionality.

[This page left intentionally blank]